

# Molonglo Valley – Stage 2 Community Newsletter



ACT Planning &  
Land Authority

The ACT Planning and Land Authority (ACTPLA) has engaged consultants AECOM to undertake a series of studies for stage two (Stage 2) of urban development at Molonglo Valley. Stage 2 studies include:

- Traffic and transport
- Stormwater management
- Review of environmental studies
- Infrastructure
- Contamination
- Geotechnical

The studies are the first part of detailed planning that will identify opportunities and constraints for future development. Community consultation will form an integral part of this process.

## Background

The Canberra Spatial Plan 2004 identified the Molonglo Valley as Canberra's next major urban area. The suburbs of Wright and Coombs make up Molonglo Stage 1. Wright and Coombs have been through the site investigations and planning phase, and are currently being developed and sold for residential development.

Background planning, environmental and engineering investigations have started for the next stage of Molonglo, now referred to as Stage 2, which includes a group centre and residential areas.

These background studies by AECOM will inform preparation of further detailed planning. A planning and design framework will ultimately detail the specific planning, infrastructure, design and environmental controls for the area.

## Ongoing studies

In addition to the studies being undertaken by AECOM for the Molonglo Valley – Stage 2 project, there are a number of other current studies which will also influence the future planning of this area. These studies include:

- Coombs Pond Feasibility Study - Bill Guy and Partners (in progress)
- Scrivener Dam Flood Hydrology and Dam Safety Review - SKM (in progress)
- Detailed heritage assessment - BIOSIS (in progress)
- Community facilities and recreational needs assessment - Elton (in progress)
- Commercial land requirements study - CBRE (in progress)
- Molonglo Valley strategic assessment (in progress).

## Community involvement

A community information display will be held to gain feedback on issues of concern in regard to the future planning of the area. Details of the display are:

**Date:** Wednesday 25 August 2010

**Time:** 4.00pm to 7.00pm

**Location:** St Peters Anglican Church, Weston  
(corner Watling Place and Parkinson Street, near Cooleman Court)

Representatives from ACTPLA and the consultant team will be in attendance to discuss the site, community issues and future planning options. Residents are invited to drop in on an informal basis.

The content of the information display will be available on the ACTPLA website after the event.

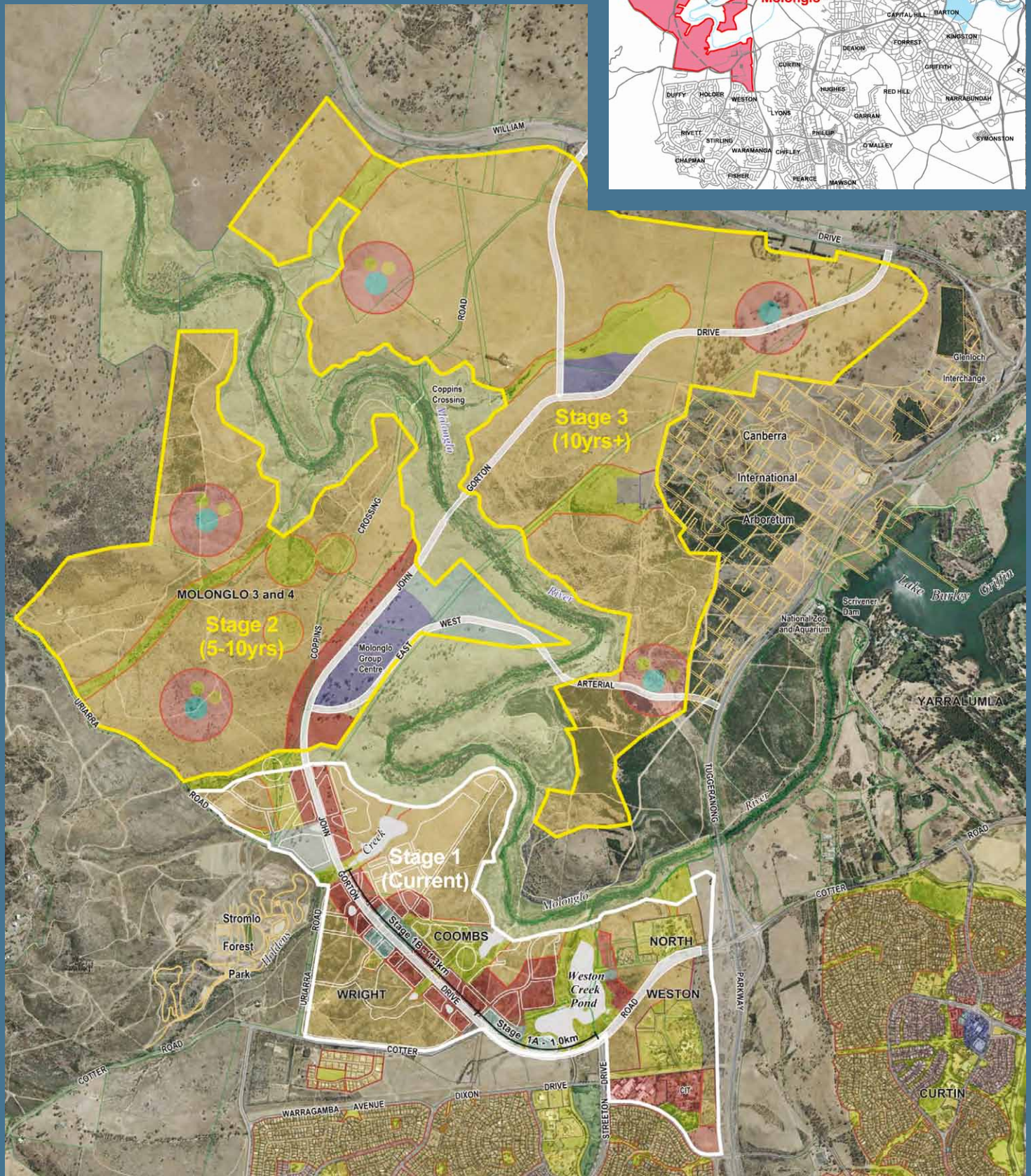
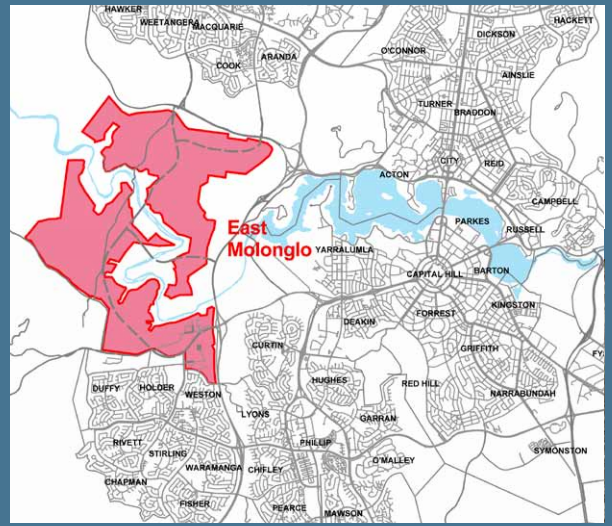
## Project timetable

The background studies are expected to be completed by September 2010. The outcomes of the studies will be used to influence more detailed planning of the future suburbs.

There will be further opportunities for community input into the planning of the stage 2 suburbs when work begins on a planning and design framework in late 2010.



# Map of Molonglo Valley – Stage 2 study area



For more information visit:

- [www.actpla.act.gov.au/molonglo](http://www.actpla.act.gov.au/molonglo) (Note that free internet access is available at all ACT public libraries)
- ACTPLA's Customer Service Centre, 16 Challis Street, Dickson, or phone 6207 1923.